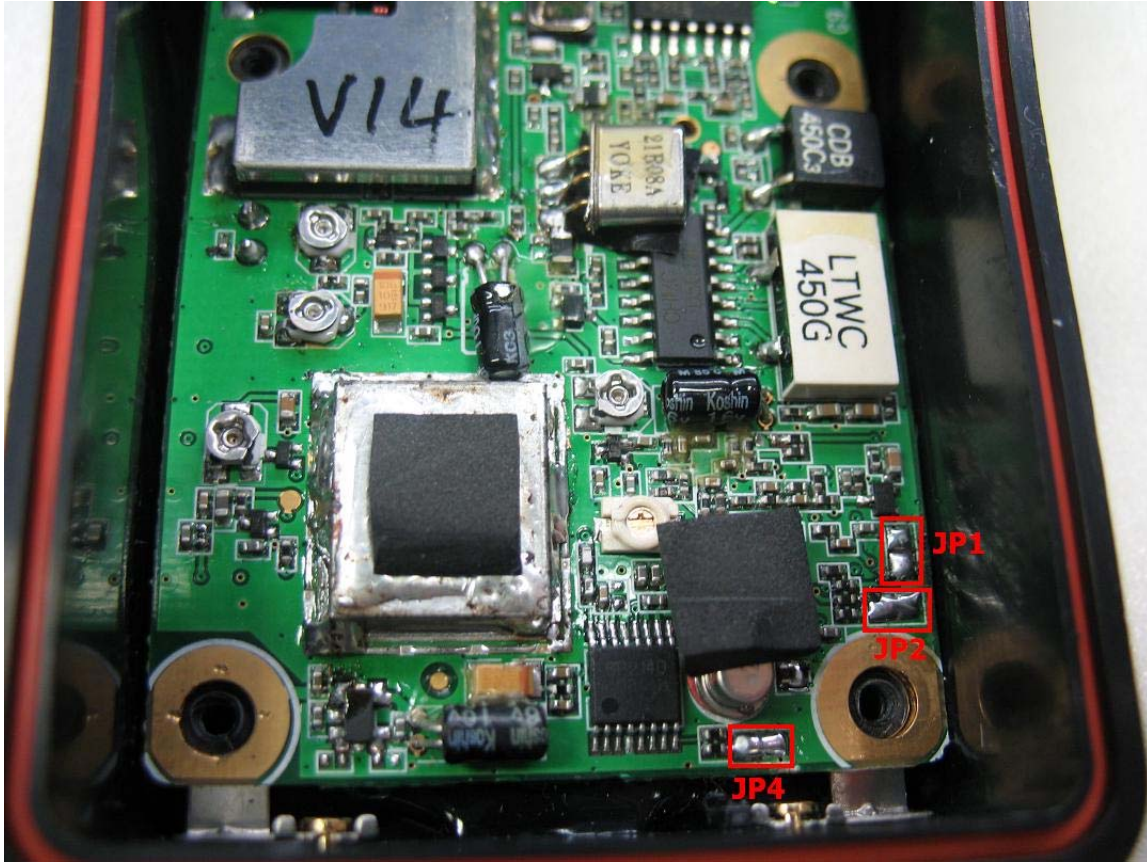


## LINK SETTING FOR MIDLAND G9



- Open the radio and follow below table for link setting:

	default setting for PMR version only	default setting for dual band version PMR/LPD				
J_POWER1	Short	open	open	Open	Short	Short
J_POWER2	Short	Short	open	Open	Short	open
J_POWER4	Short	Short	Short	Open	Open	open
By menu radio	24CH PMR (500/10mW)	24CH PMR (500/10mW) + 69CH LPD (10mW)	LPD 10mW	LPD = 5W/500mW	24CH PMR (5W/500mW) + 69CH LPD (5W/500mW)	24CH PMR (5W/500mW)
When press PTT button	500/10mW	PMR = 500/10mW LPD = 10mW	always 10mW	5W/500mW	PMR e LPD = 5W/500mW	5W/500mW
When press BOOST button	Always 500mW	PMR = always 500mW LPD = always 10mW	Always 10mW	Always 5W	Always 5W for LPD and PMR	Always 5W